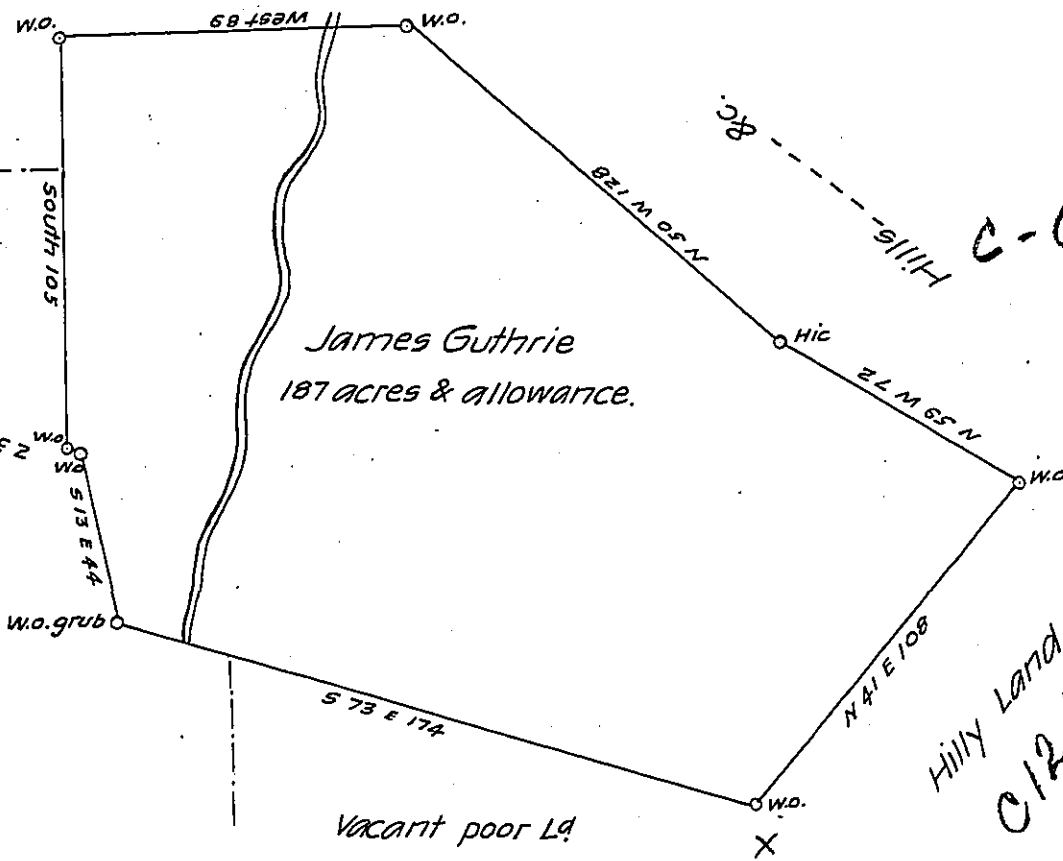


C 124-262
Jno. McCrea

C-24
Alexander Caldwell

171



C-65-62

Hilly Land
C 124-56

C 217-249

In pursuance of a Warrant dated 17th of February 1773 Survey'd for James Guthrie the above Described tract of Land (the Trick) containing one Hundred & Eighty seven acres, with an allowance proportioned to 6 P cent situate on the South side of Conemaugh upon Spruce Run, a small branch of said Creek about a Mile from where it empties into Conemaugh in Westmorland County &c. Survey'd the 3d of May 1773.

P. Robert McCrea DS

To John Lukens Esq.

DS.

S. Genl

IN TESTIMONY that the above is a copy of the original remaining on file in the Department of Internal Affairs of Pennsylvania, made conformably to an Act of Assembly approved the 16th day of February, 1833, I have hereunto set my Hand and caused the Seal of said Department to be affixed at Harrisburg, this Sixth day of December 1904

Loac R. Brown
Secretary of Internal Affairs.